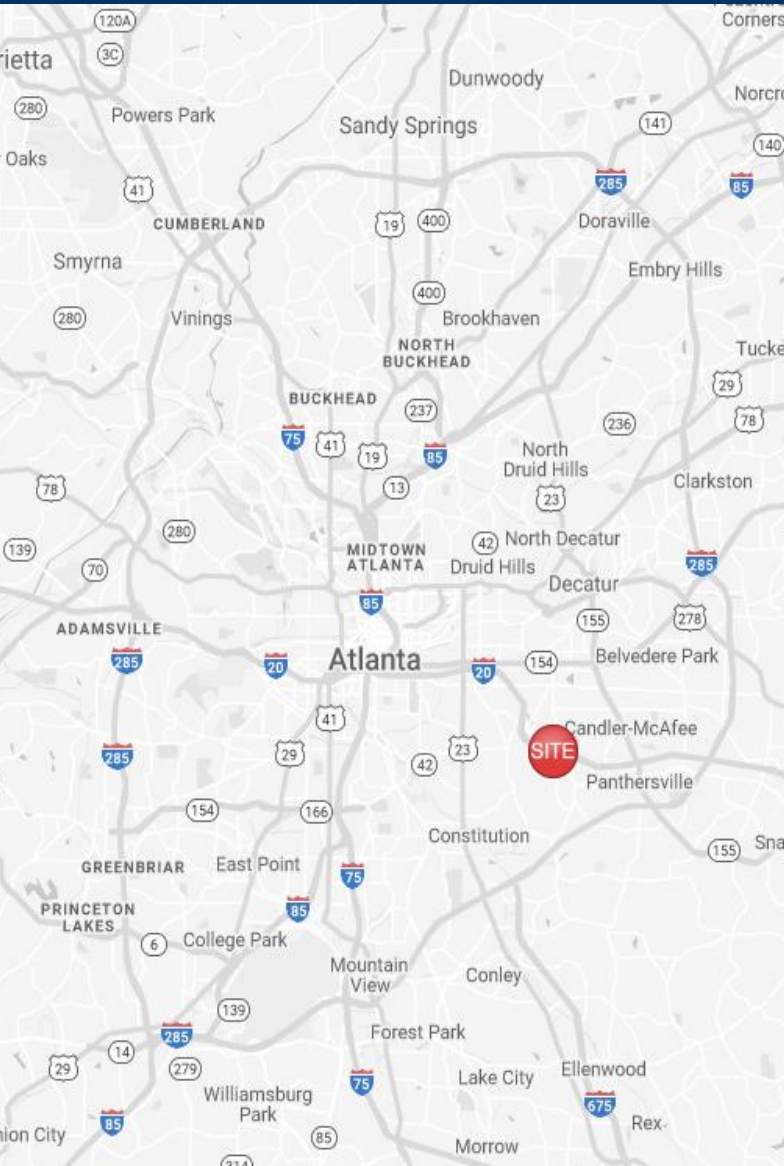


# East Lake Crossing

2434 Gresham Road SE  
Atlanta, Georgia 30316



# Leasing Contacts

Marrissa Chanin  
678-501-5341  
Marrissa@riverwoodproperties.com

Allie Hodge  
678-501-5342  
Ahodge@riverwoodproperties.com

## Property Highlights

This 8,300 square foot shopping center sits on .69 acres of land and includes the nationally known, BB&T bank. The property is located directly off Highway 20 and sits across the street from a Walmart Supercenter. The consistent flow of traffic in the area make this an ideal location for any retail or service tenant

**Site Access:** Property is easily accessible via both left & right turn entrance and exit.

[riverwoodproperties.com](http://riverwoodproperties.com)



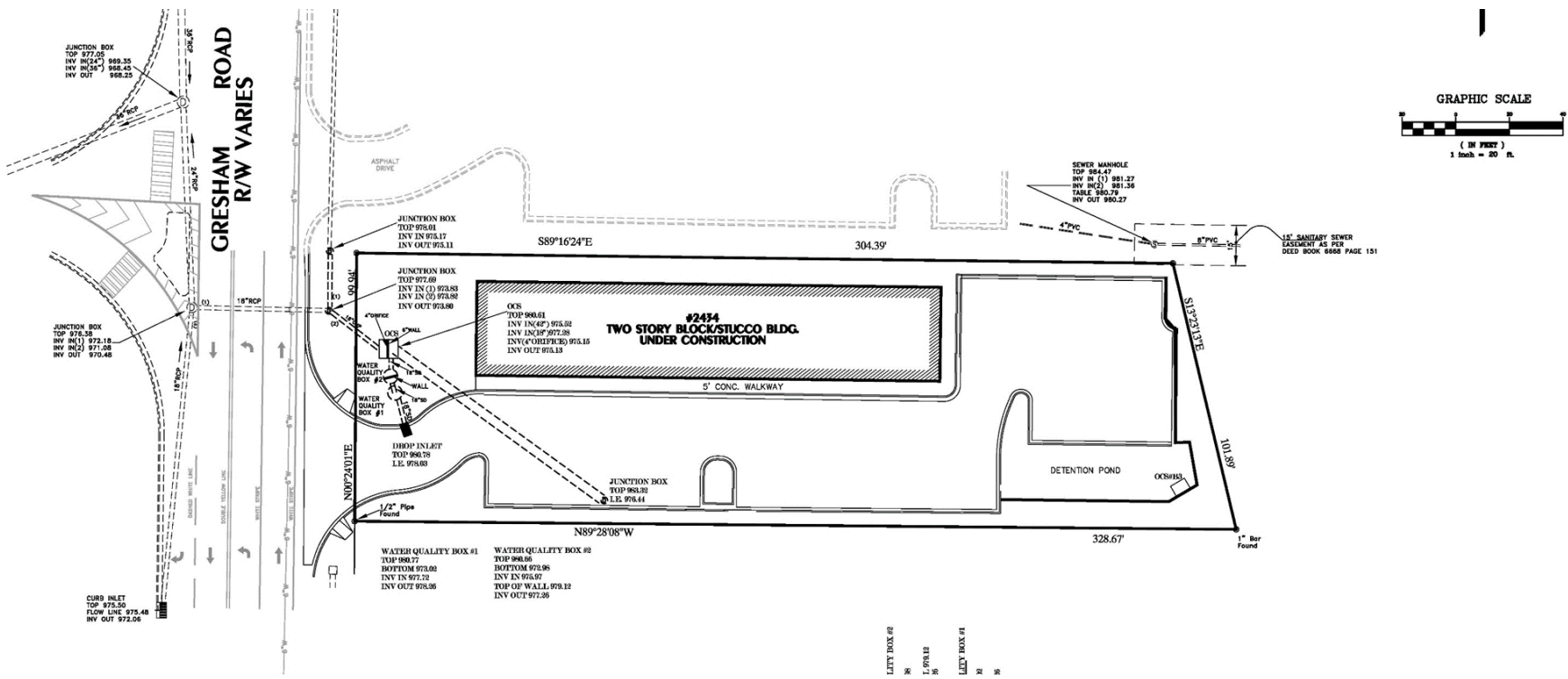
# East Lake Crossing

## TENANTS

A	American Deli	1,000
B	BB&T Bank	1,000
C	Sylvain Eye Care	1,300
D	Blush Hair Studio	1,000
E	Pierced by Lauren	1,000
F	MW Risk Management	900
G	Mscotay's Boujee Bar	900
H	Universal Construction	1,200

GLA: 8,300 SF

Availability: 100%





# AREA DEMOGRAPHICS



2021  
Population

1 MILE	10,297
3 MILE	86,617
5 MILE	263,760



2021 Daytime  
Population

1 MILE	1,366
3 MILE	20,922
5 MILE	95,497



Household 2021

1 MILE	3,927
3 MILE	34,267
5 MILE	111,404



Household  
Income

1 MILE	\$63,660
3 MILE	\$84,199
5 MILE	\$96,121



## EAST LAKE CROSSING

Trade Area Overview