

# McDonough Crossing

130 Westridge Parkway,  
McDonough, GA 30253



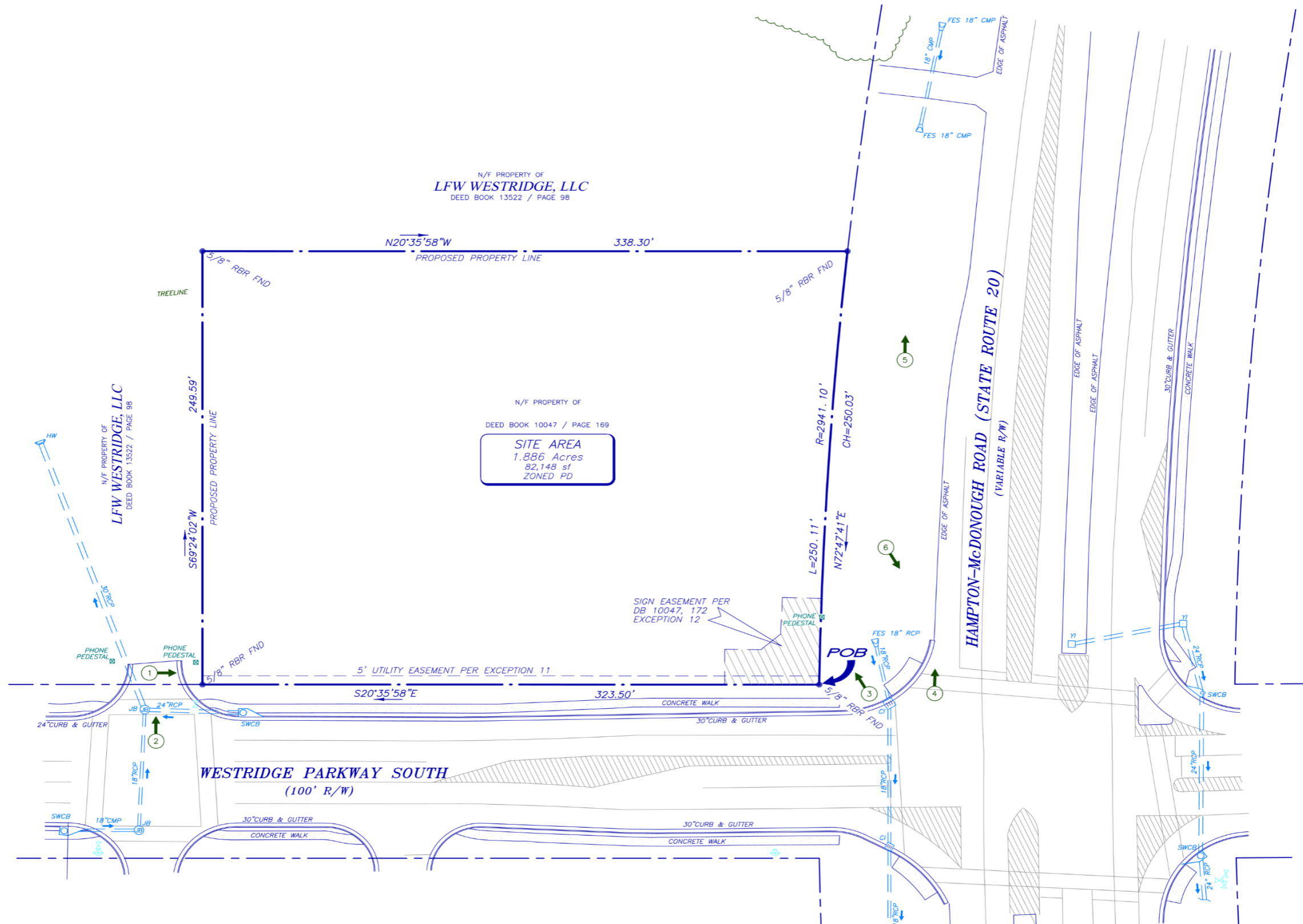
## Leasing Contacts

Marrissa Chanin  
678-501-5341  
Marrissa@riverwoodproperties.com

Anita Ford  
678-501-5348  
Anita@riverwoodproperties.com

## Property Highlights

McDonough Crossing is a 1.886 acre parcel at the corner of Westridge Parkway & Hampton-McDonough Road. The new development is located in Henry County, the fastest growing county in the Atlanta MSA and across from a Publix Anchored center. McDonough Crossing is a mile southwest of South Point Shopping Center, a regional power center development. This proposed development is well-positioned with frontage on Highway 20, a main thoroughfare in the trade area, with access to the signaled intersection. This site is zoned PD.



# MCDONOUGH CROSSING

## Site Plan

# AREA DEMOGRAPHICS



2021  
Population

1 MILE	5,810
3 MILE	30,432
5 MILE	68,956



2021 Daytime  
Population

1 MILE	3,548
3 MILE	14,025
5 MILE	31,836



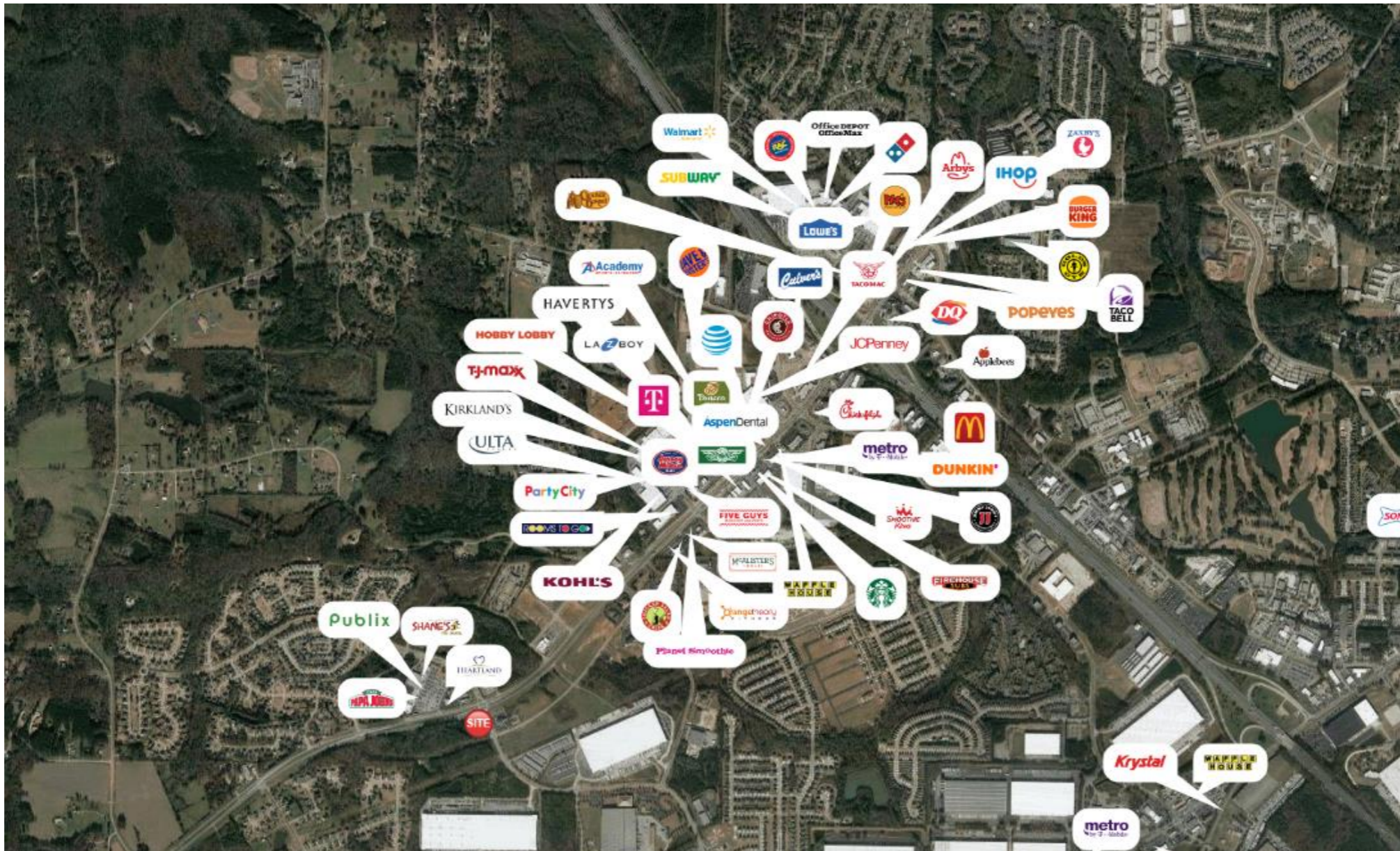
Household 2021

1 MILE	1,994
3 MILE	10,578
5 MILE	24,049



Household  
Income

1 MILE	\$88,588
3 MILE	\$77,827
5 MILE	\$81,297



## MCDONOUGH CROSSING

Trade Area Overview