

Mulberry Walk

6323 Grand Hickory Dr
Braselton, GA 30517



RIVERWOOD
PROPERTIES, LLC

Leasing Contacts

Allie Hodge Motz
678-501-5342
allie@riverwoodproperties.com

riverwoodproperties.com

riverwoodproperties.com

Property Highlights

- The center has two access points on Grand Hickory Drive and plenty of parking for patrons.
- Positioned on the corner of the signalized intersection Grand Hickory Drive and Old Winder Hwy.
- Offers a strong mix of service, retail and restaurant tenants.
- 27,800 VPD offering great exposure.
- Retail/Restaurant Spaces Available | 2,833-5,507 SF
- Zoned C3

Site Access: Property is accessible via two curb cuts on Grand Hickory Drive.

Mulberry Walk

TENANTS

100A	Mahana Fresh	1,600
100B	Wayback Burger	1,600
100D	Mathnasium	1,486
100E	Marble Slab Creamery/Great American Cookie	1,457
100F	Stretch Zone	1,457
100G	Woof Gang Bakery & Grooming	2,400
200A/B	Restaurant Space Available	5,507
200C	Solus Mei Custom Jewelry	1,613
200D	Hit's Tap Room	1,500
200E	Georgia Nails and Spa	1,620
200F	Cache Hair Salon	1,760
300A	Umami Tavern	2,414
300B	Timeless Aesthetics of Atlanta	1,376
300C/D	Retail Space Available	2,833
300E	Fit Body Boot Camp	2,483
GLA:		20,000 SF
Availability:		2,833-5,507 SF



MULBERRY WALK

Site Plan

AREA DEMOGRAPHICS



2023
Population

1 MILE	6,219
3 MILE	22,135
5 MILE	67,505



2023 Daytime
Population

1 MILE	1,838
3 MILE	6,120
5 MILE	17,013



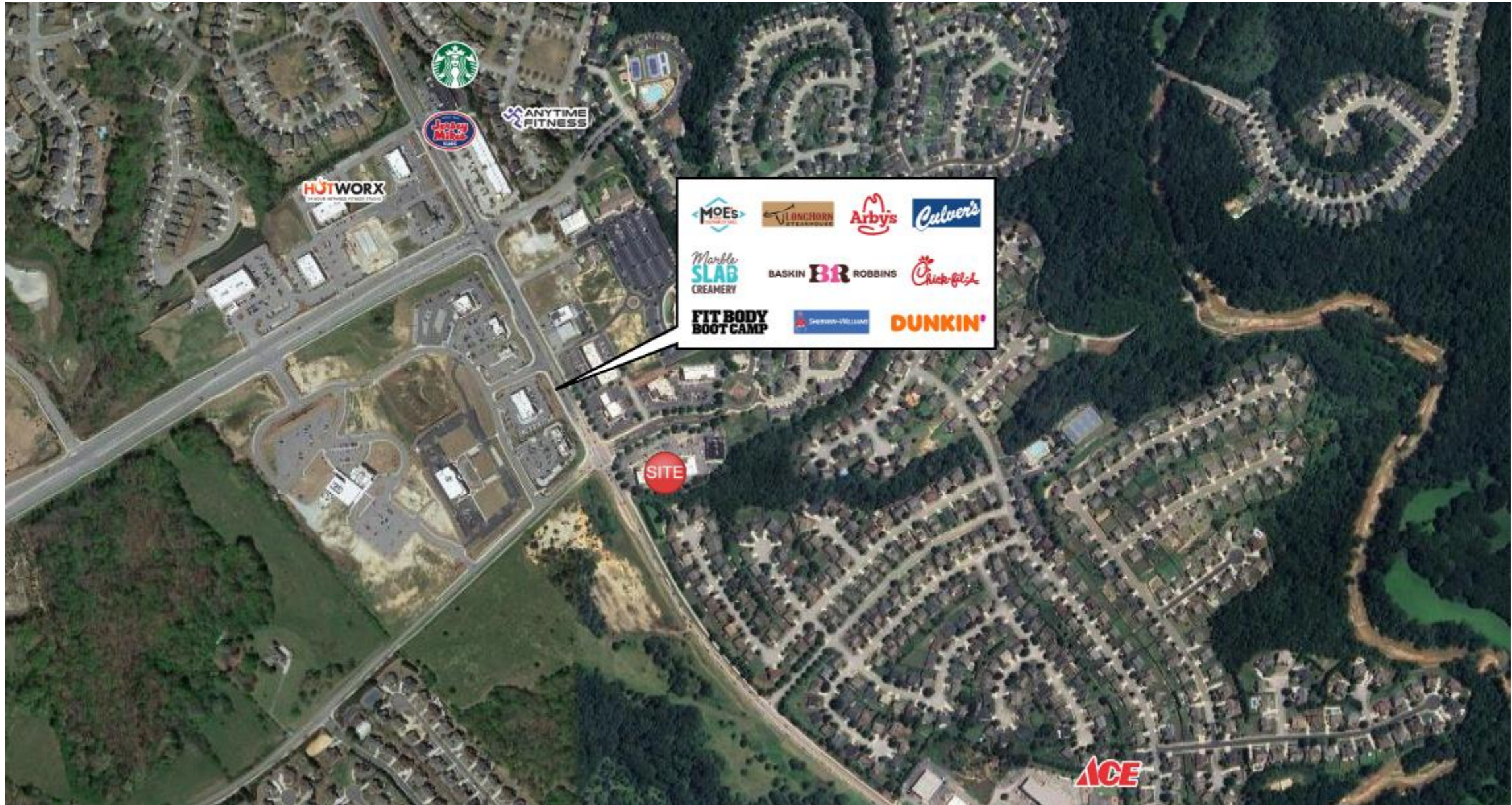
Household 2023

1 MILE	2,292
3 MILE	7,939
5 MILE	22,974



Household
Income

1 MILE	\$166,380
3 MILE	\$161,160
5 MILE	\$138,273



MULBERRY WALK

Trade Area Overview