

# Sharon Promenade

1465 Peachtree Parkway  
Cumming, Georgia 30041



## Leasing Contacts

Marrissa Chanin  
678-501-5341  
[Marrissa@riverwoodproperties.com](mailto:Marrissa@riverwoodproperties.com)

Allie Hodge  
678-501-5342  
[ahodge@riverwoodproperties.com](mailto:ahodge@riverwoodproperties.com)

## Property Highlights

Sharon Promenade is located on Peachtree Parkway, just 2 miles East of Georgia Hwy 400, in a high-density corridor of Forsyth County. Sharon Promenade consists of three buildings on a L-shaped site. The site has ample frontage and visibility along two primary thoroughfares within the neighborhood.

**Site Access:** Property is accessible via Peachtree Parkway and Sharon Road.

[riverwoodproperties.com](http://riverwoodproperties.com)



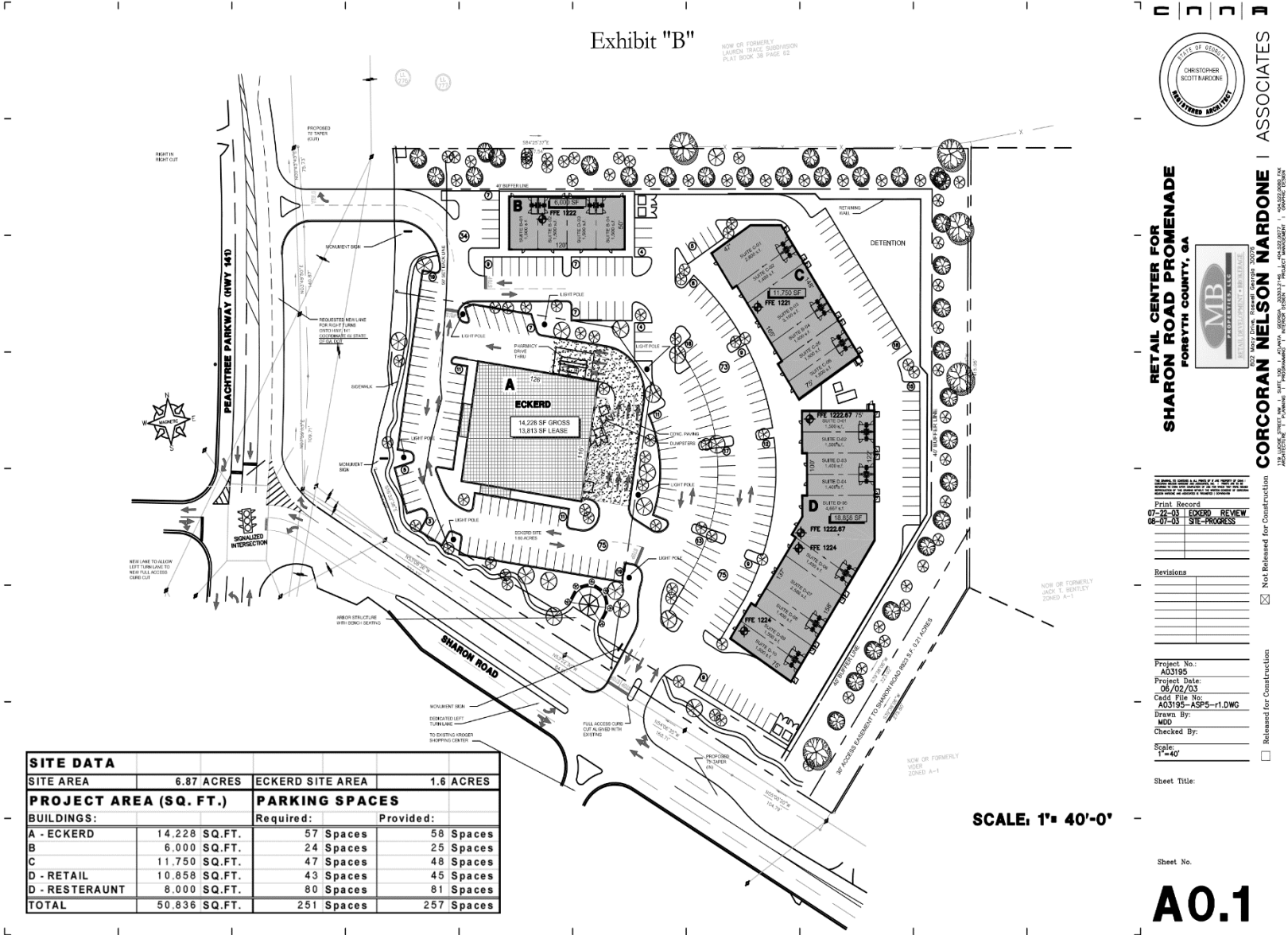
# Sharon Promenade

## TENANTS

B1	Subway	1,500
B3	Liquor Store	3,000
B4	Massage Therapy	1,500
C1	Hair Due Salon	4,010
C3	Forsyth Family Dentistry	2,083
C4	Poshe Nail Spa	1,832
C5	Thai Basil	3,525
D1	Sunshine Pediatrics	1,500
D2	Kitani Sushi Restaurant	1,500
D4	Black Diamond Bar & Grill	7,524
D5	Workout Anytime	5,386
D7	Tomkins Family Chiropractor	1,500
D8	Matt's Custom Care Cleaners	1,500

GLA: 36,360 SF

Availability: 100%  
Leased



# SHARON PROMENADE

## Site Plan



# AREA DEMOGRAPHICS



2021  
Population

1 MILE	6,750
3 MILE	54,799
5 MILE	157,989



2021 Daytime  
Population

1 MILE	2,024
3 MILE	28,669
5 MILE	88,920



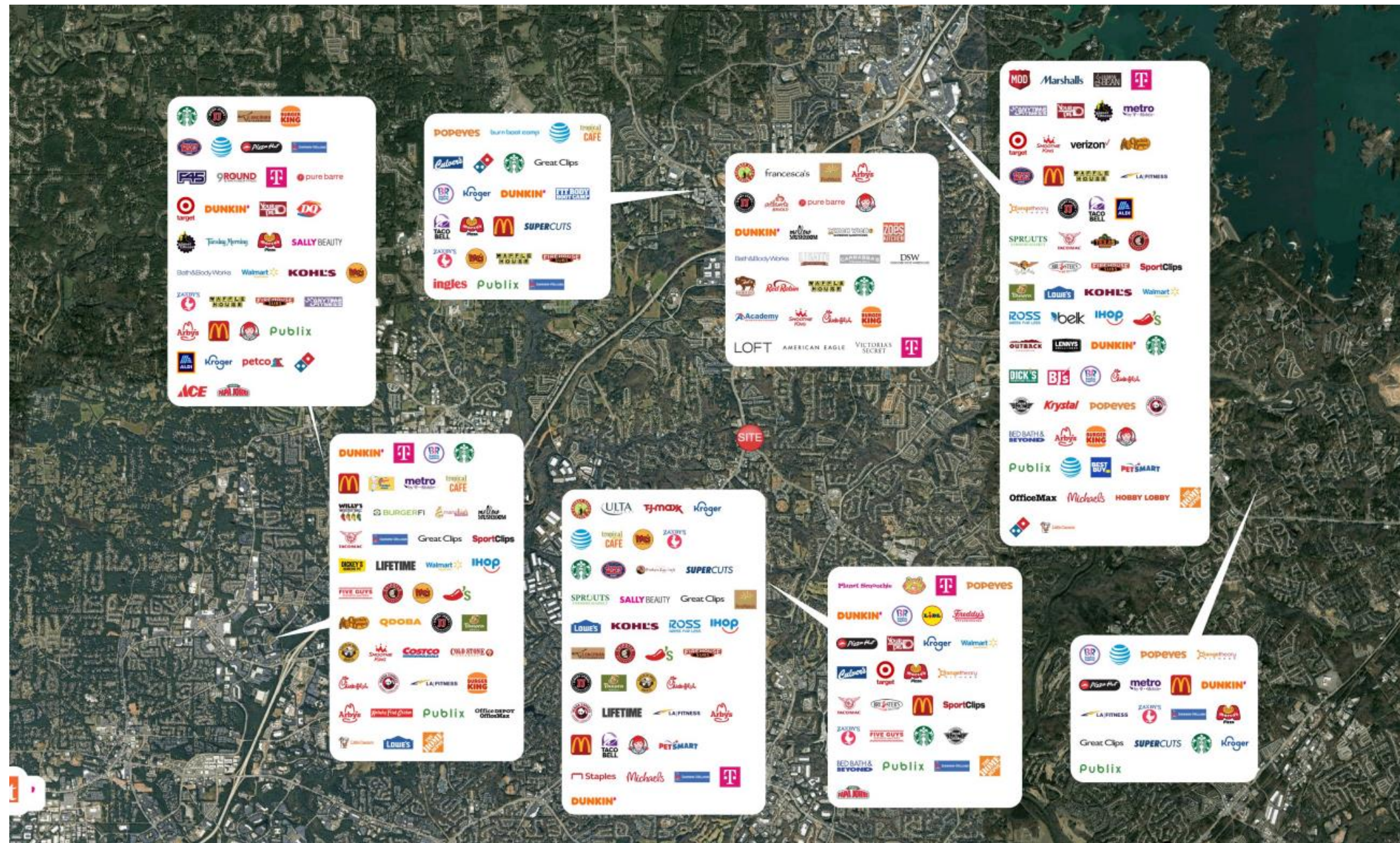
Household 2021

1 MILE	2,238
3 MILE	18,192
5 MILE	53,482



Household  
Income

1 MILE	\$165,867
3 MILE	\$162,005
5 MILE	\$157,088



## SHARON PROMENADE

Trade Area Overview