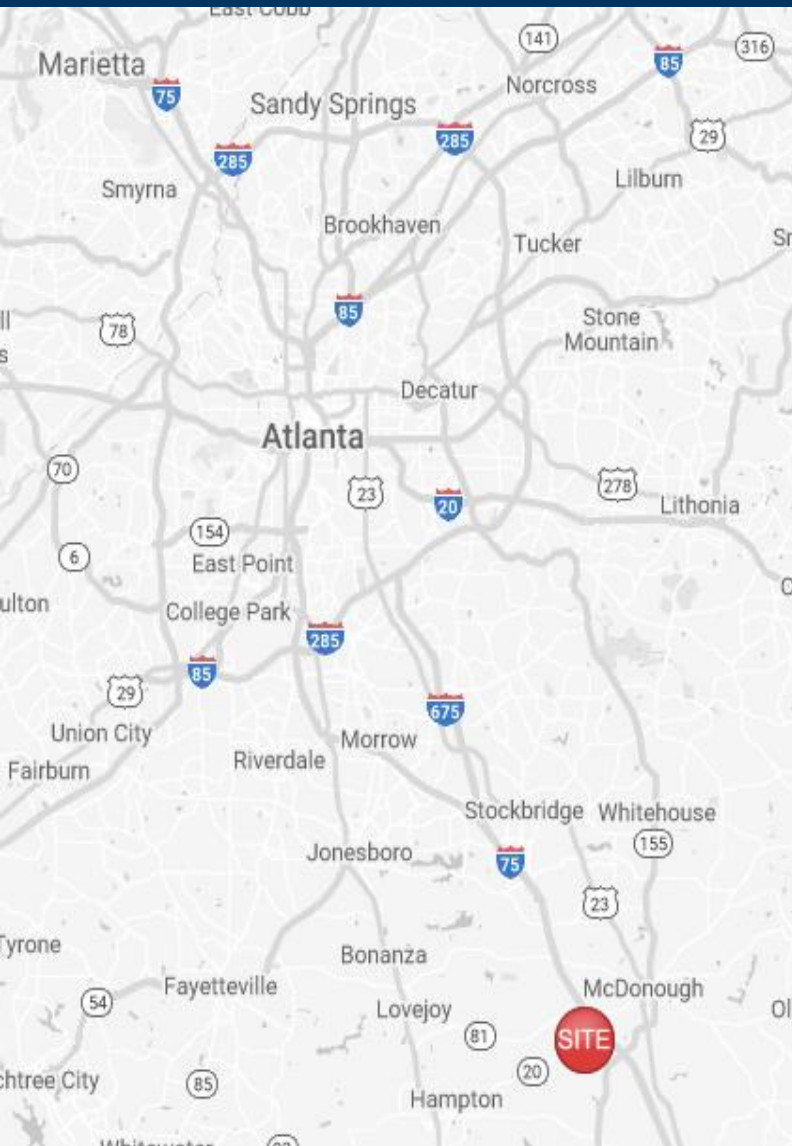


Southern Crossing

1605 Highway 20
McDonough, GA 30253

RIVERWOOD
PROPERTIES, LLC



Leasing Contacts

Allie Hodge
678-501-5342
allie@riverwoodproperties.com

riverwoodproperties.com

Property Highlights

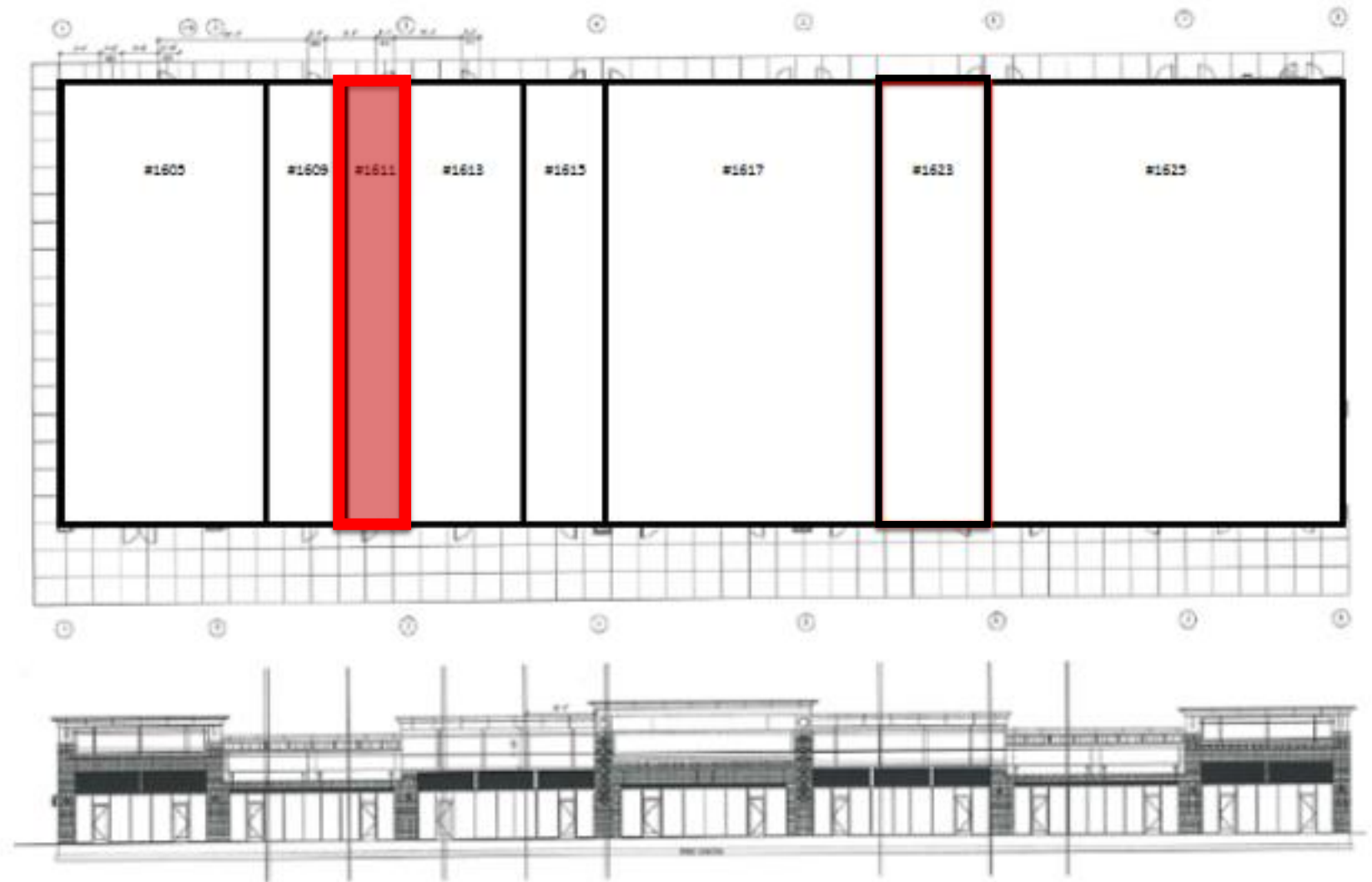
- Southern Crossing is located in the heart of the McDonough retail corridor on Highway 20 across from South Point, a regional power center development.
- South Point boasts big box retailers including Kohl's, Academy Sports, and many more.
- McDonough pulls shoppers from a large radius since it is the first retail corridor in metro Atlanta after Macon, when traveling north on 75.
- Retail Space Available | 718 SF

Site Access: Property is accessible via curb cut on Highway 20.

Southern Crossing

TENANTS

1605	McAlister's Deli	3,000 SF
1609	Planet Smoothie	1,200 SF
1611	Retail Space Available	718 SF
1613	Caring Touch Dentistry	1,890 SF
1615	SelecSource Staffing	1,200 SF
1617	Performance Physical Therapy	4,000 SF
1623-1625	Family Medical & Urgent Care	6,800 SF
GLA:		18,808 SF
Availability:		100%



SOUTHERN CROSSING
Site Plan

AREA DEMOGRAPHICS



2023
Population

1 MILE	5,810
3 MILE	37,422
5 MILE	78,533



2023 Daytime
Population

1 MILE	3,314
3 MILE	15,188
5 MILE	32,987



Household 2023

1 MILE	2,163
3 MILE	13,589
5 MILE	28,049



Household
Income

1 MILE	\$91,000
3 MILE	\$78,679
5 MILE	\$94,156

