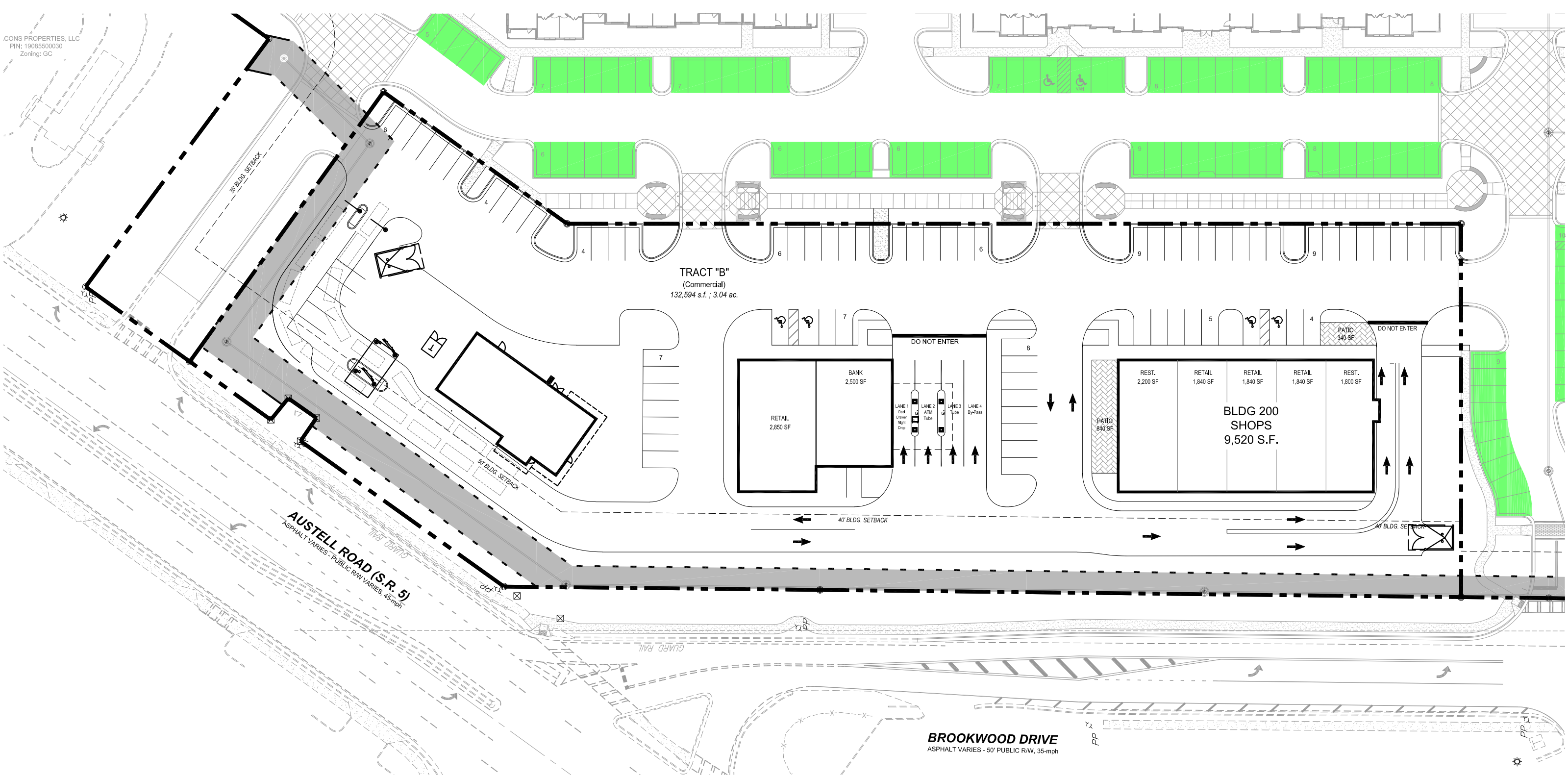


CONS PROPERTIES, LLC
PIN: 19085500030
Zoning: GC



TRACT "B"
(Commercial)
132,594 s.f. ; 3.04 ac.

AUSTELL ROAD (S.R. 5)
ASPHALT VARIES - PUBLIC RW VARIES, 45 mph

BROOKWOOD DRIVE
ASPHALT VARIES - 50' PUBLIC RW, 35 mph