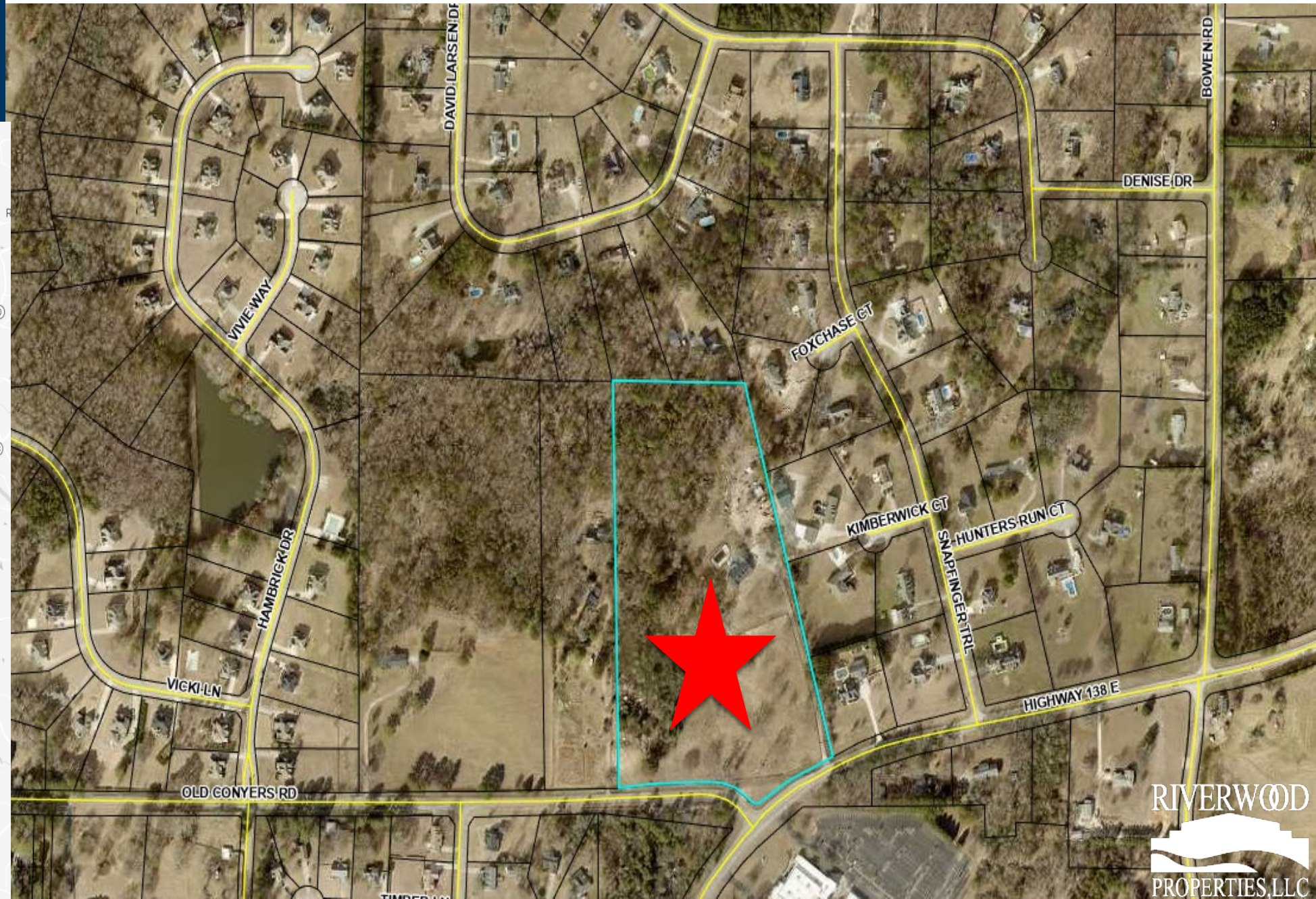
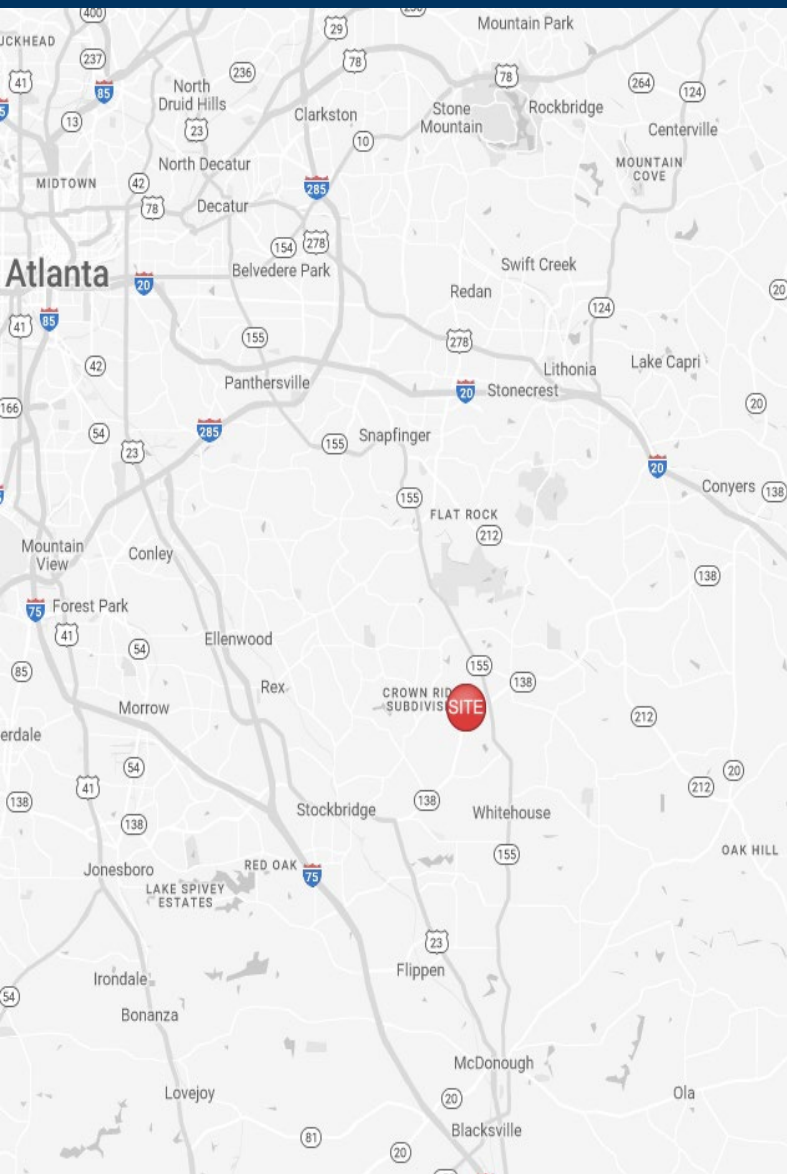


Land For Sale

2100 Hwy 138 E
Stockbridge, GA 30281



For more information:

Erika Radilla
678-501-5355 Office
404-698-5788 Cell
erika@riverwoodproperties.com

Property Highlights

- Calling all investors and builders, you don't want to miss this!
- Opportunity to build premium community to meet the immediate and growing housing needs for this market.
- 18.87 Acres located at the corner of Old Conyers Road and Hwy 138 E, Stockbridge, GA.
- Located less than 2 minutes from Hwy 155 N
- Near State Parks such as South Rockdale Community Park, Panola Mountain State Park, and Arabia Mountain.
- Zoned R1-Residential but can be rezoned.



**\$900k Residential
Development Coming
Soon!**

**Corner LOT
18.87 Acres
Available for
Development**

2100 Hwy 138 E
Stockbridge, GA 30281

Land For Sale

AREA DEMOGRAPHICS



2022
Population

3 MILE	16,348
5 MILE	53,062
10 MILE	41,292



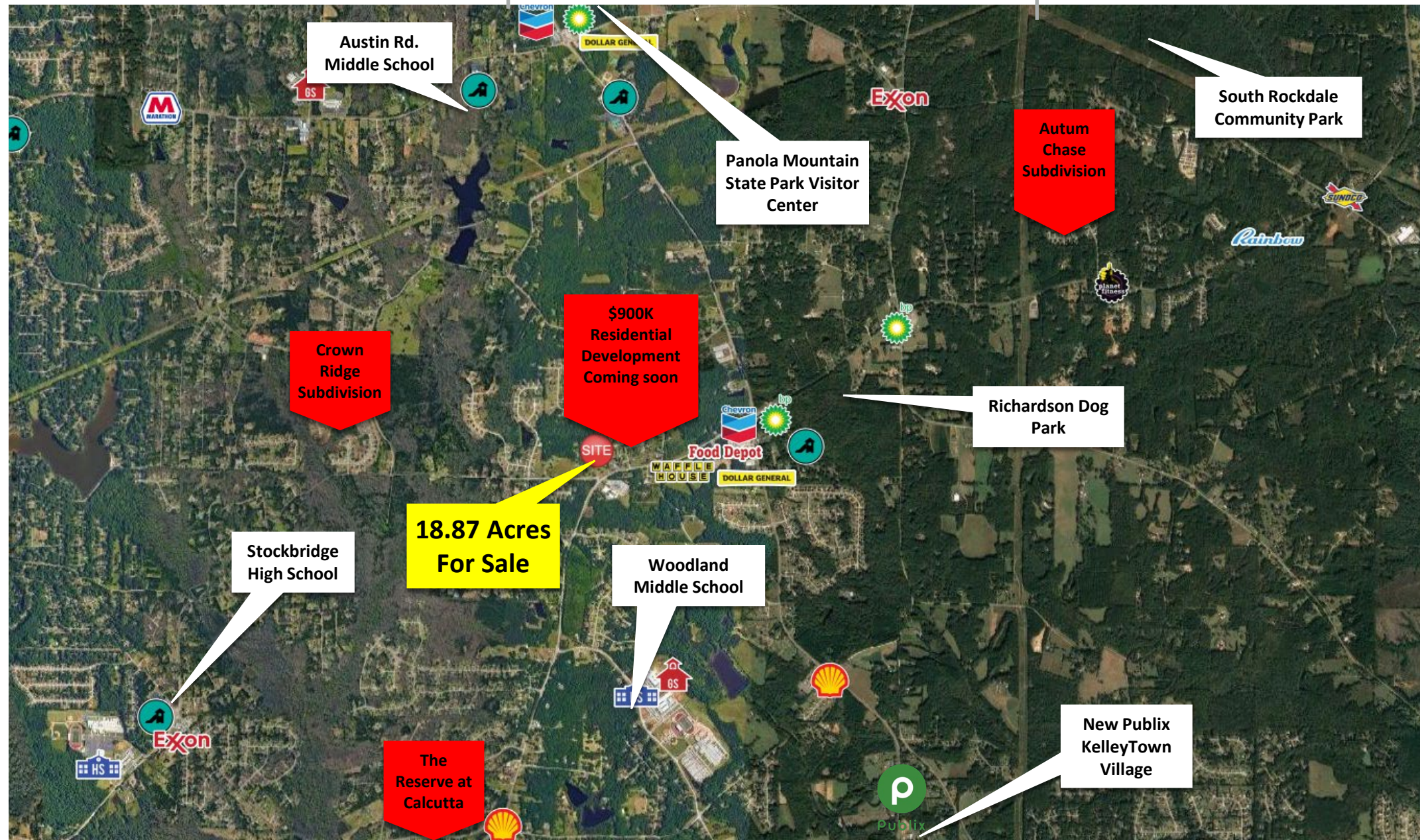
Household 2022

3 MILE	5,762
5 MILE	18,846
10 MILE	146,717



Household
Income

3 MILE	\$97,634
5 MILE	\$99,614
10 MILE	\$92,512



2100 HWY 138 E LAND FOR SALE

Trade Area Overview