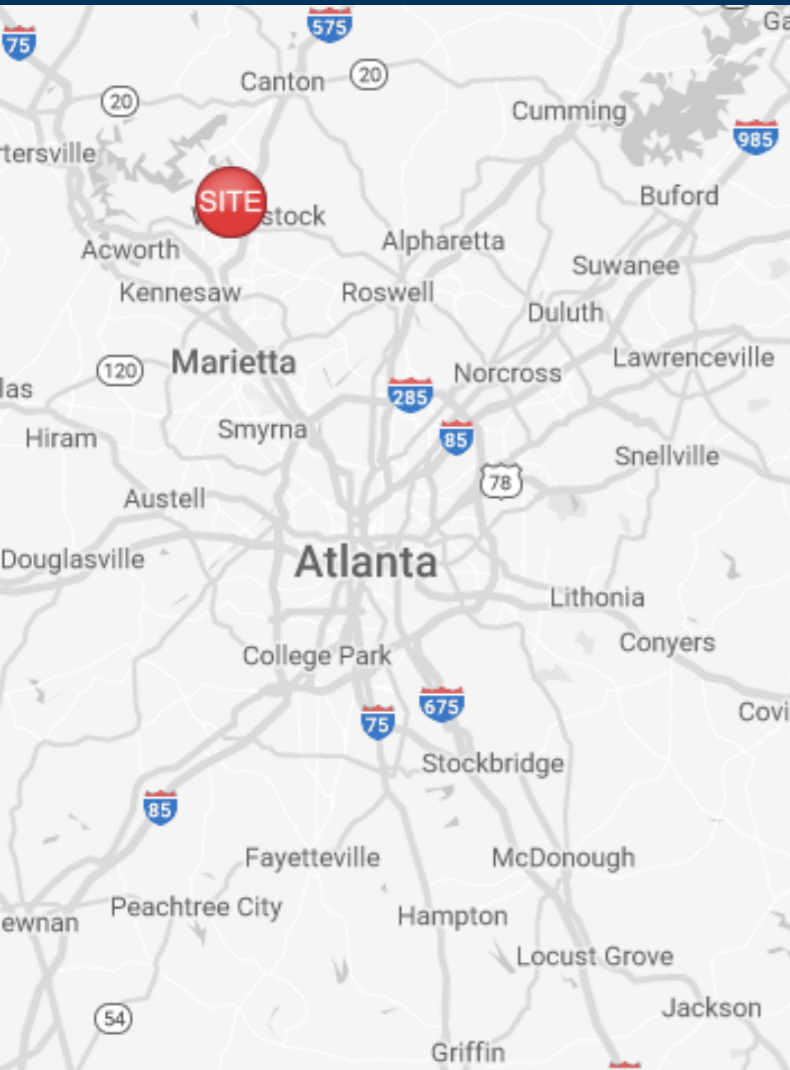


The Plaza at Towne Lake

2370 Towne Lake Pkwy
Woodstock, GA 30189



RIVERWOOD
PROPERTIES, LLC



Leasing Contacts

Allie Hodge
678-501-5342
allie@riverwoodproperties.com

riverwoodproperties.com

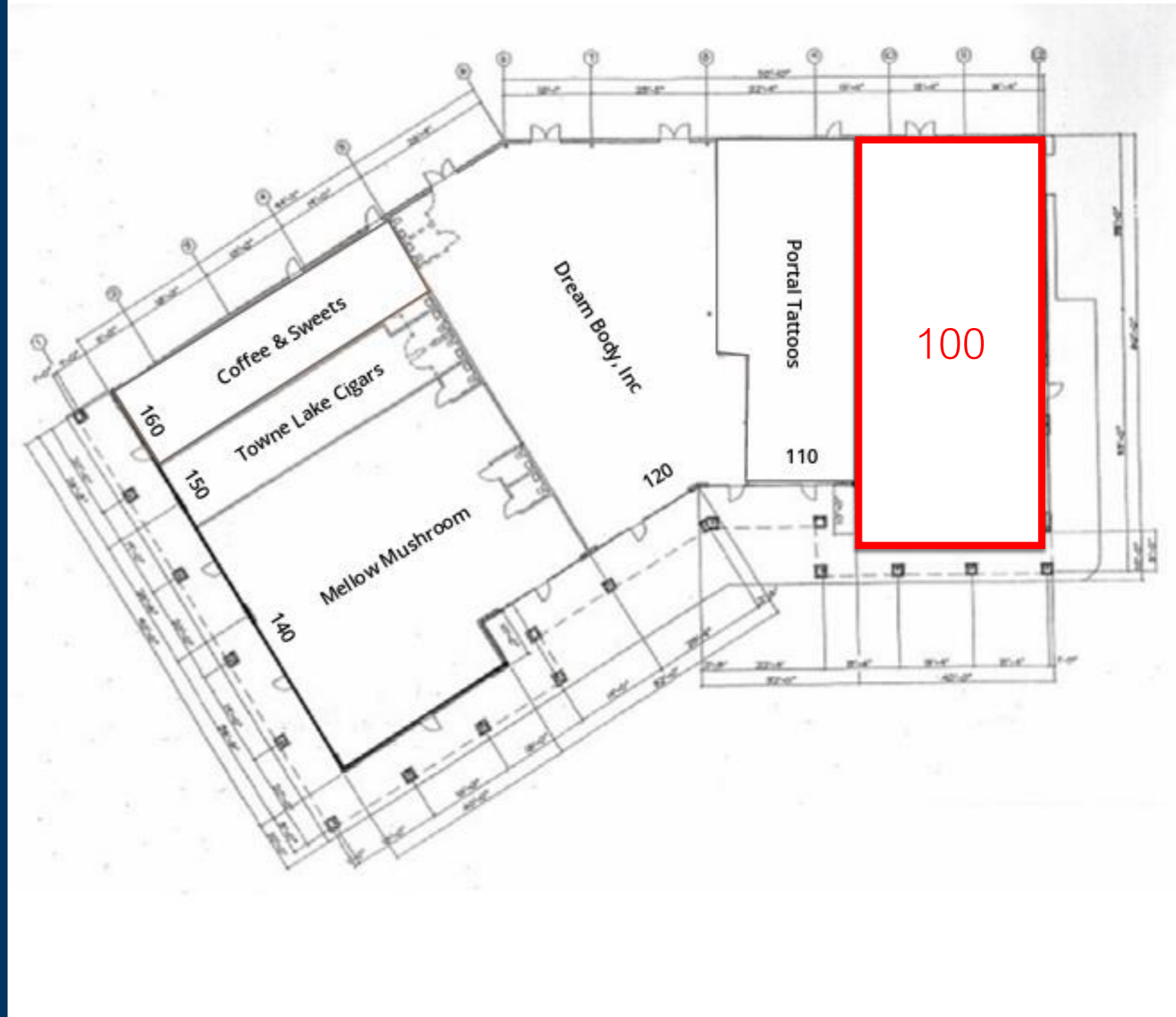
Property Highlights

- Woodstock is the epicenter and heartbeat of fast-growing Cherokee County which is home to an estimated 280,000 affluent residents.
- Originally build in 2000, this attractive center has been well-kept and vigilantly maintained by the current owners for 15-years.
- the center is well-positioned to attract guests with ample parking, signage, visibility and convenient ingress/egress. Nearby Kroger is one of their top performing stores and schools nearby draws shoppers from Towne Lake Parkway (44,800 VPD traffic count).
- The center occupies a 2.71 +/--acre site with 84 parking spaces (5.5 per 1,000 s.f.).
- Zoned C3 | Commercial
- Retail Space for Lease | 3,155 SF

The Plaza at Towne Lake

TENANTS

100	Retail Space Available	3,155 SF
110	Portal Tattoos	1,715 SF
120	Dream Body, Inc	3,940 SF
140	Mellow Mushroom	3,500 SF
150	Towne Lake Cigars	940 SF
160	Coffee & Sweets	1,200 SF
	GLA:	14,450 SF
	Availability:	3,155 SF



THE PLAZA AT TOWNE LAKE

Site Plan

AREA DEMOGRAPHICS



2023
Population

1 MILE	9,812
3 MILE	66,292
5 MILE	161,545



2023 Daytime
Population

1 MILE	2,872
3 MILE	25,944
5 MILE	49,133



Household 2023

1 MILE	3,390
3 MILE	24,542
5 MILE	60,063



Household
Income

1 MILE	\$157,494
3 MILE	\$120,285
5 MILE	\$126,503



THE PLAZA AT TOWNE LAKE

Trade Area Overview