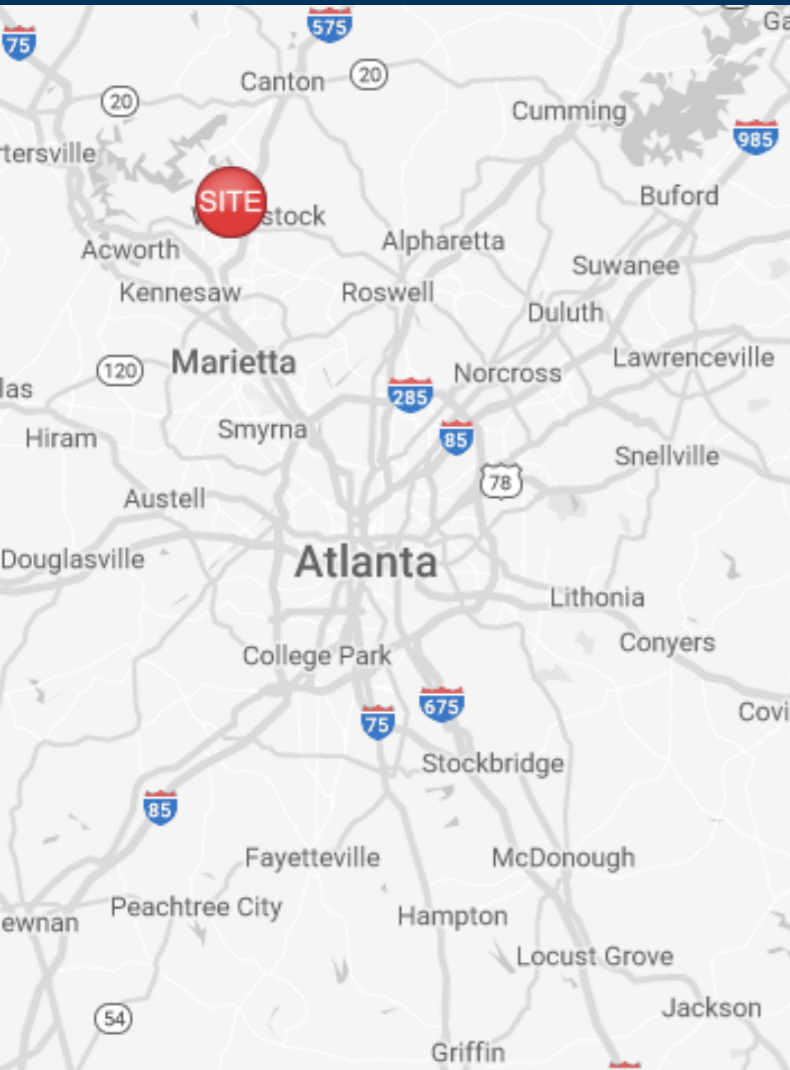


The Plaza at Towne Lake

2370 Towne Lake Pkwy
Woodstock, GA 30189



RIVERWOOD
PROPERTIES, LLC



Leasing Contacts

Allie Hodge
678-501-5342
allie@riverwoodproperties.com

riverwoodproperties.com

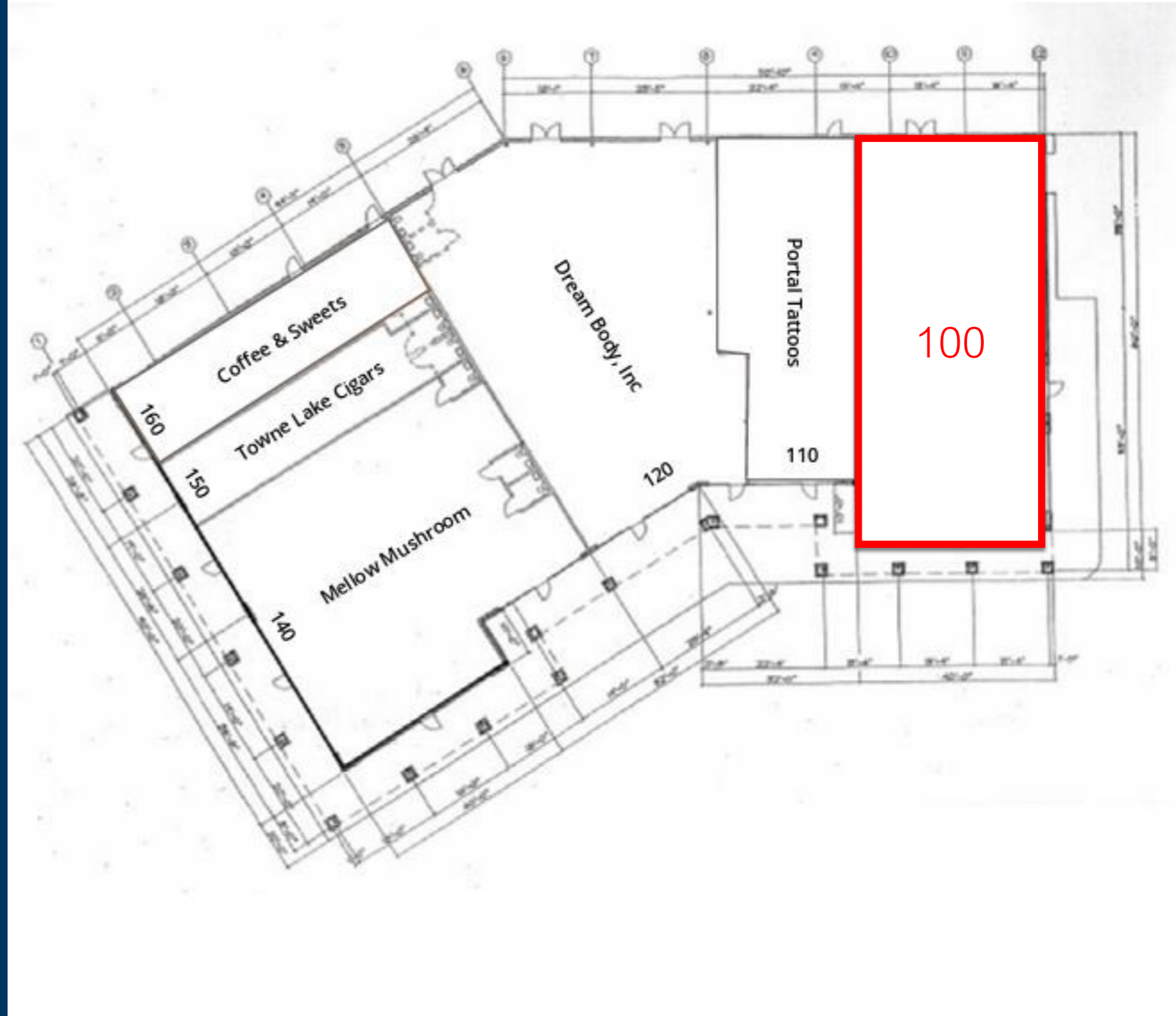
Property Highlights

- Woodstock is the epicenter and heartbeat of fast-growing Cherokee County which is home to an estimated 280,000 affluent residents.
- Originally build in 2000, this attractive center has been well-kept and vigilantly maintained by the current owners for 15-years.
- the center is well-positioned to attract guests with ample parking, signage, visibility and convenient ingress/egress. Nearby Kroger is one of their top performing stores and schools nearby draws shoppers from Towne Lake Parkway (44,800 VPD traffic count).
- The center occupies a 2.71 +/--acre site with 84 parking spaces (5.5 per 1,000 s.f.).
- Zoned C3 | Commercial
- Retail/ Office Space for Lease | 3,155 SF

The Plaza at Towne Lake

TENANTS

100	Retail/ Office Space Available	3,155 SF
110	Portal Tattoos	1,715 SF
120	Twisted Cycle	3,940 SF
140	Mellow Mushroom	3,500 SF
150	Towne Lake Cigars	940 SF
160	Coffee & Sweets	1,200 SF
	GLA:	14,450 SF
	Availability:	3,155 SF



THE PLAZA AT TOWNE LAKE

Site Plan

AREA DEMOGRAPHICS



2023
Population

1 MILE	9,812
3 MILE	66,292
5 MILE	161,545



2023 Daytime
Population

1 MILE	2,872
3 MILE	25,944
5 MILE	49,133



Household 2023

1 MILE	3,390
3 MILE	24,542
5 MILE	60,063



Household
Income

1 MILE	\$157,494
3 MILE	\$120,285
5 MILE	\$126,503



THE PLAZA AT TOWNE LAKE

Trade Area Overview