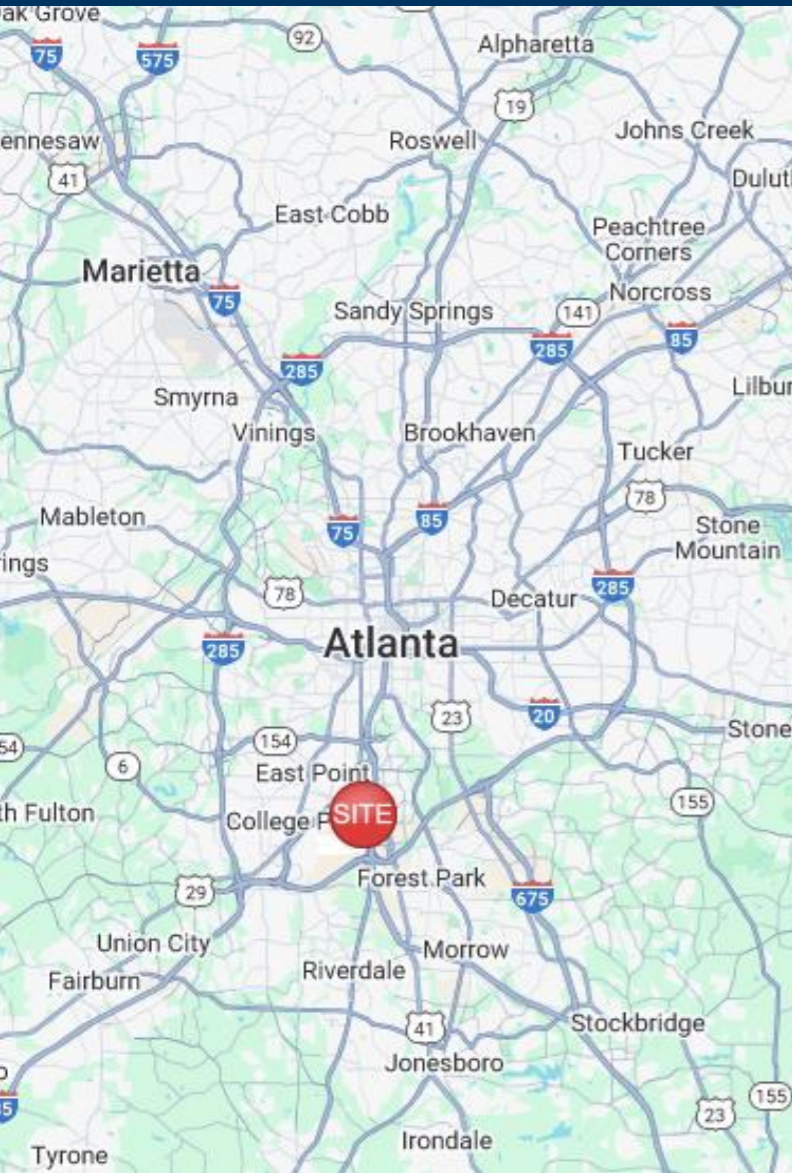


3552 Perkins Street

3552 Perkins Street
Hapeville, GA 30354



G
R
O
U
N
D

L
E
A
S
E

Leasing Contacts

Marrissa Chanin
678-501-5341
marrissa@riverwoodproperties.com

riverwoodproperties.com

Property Highlights

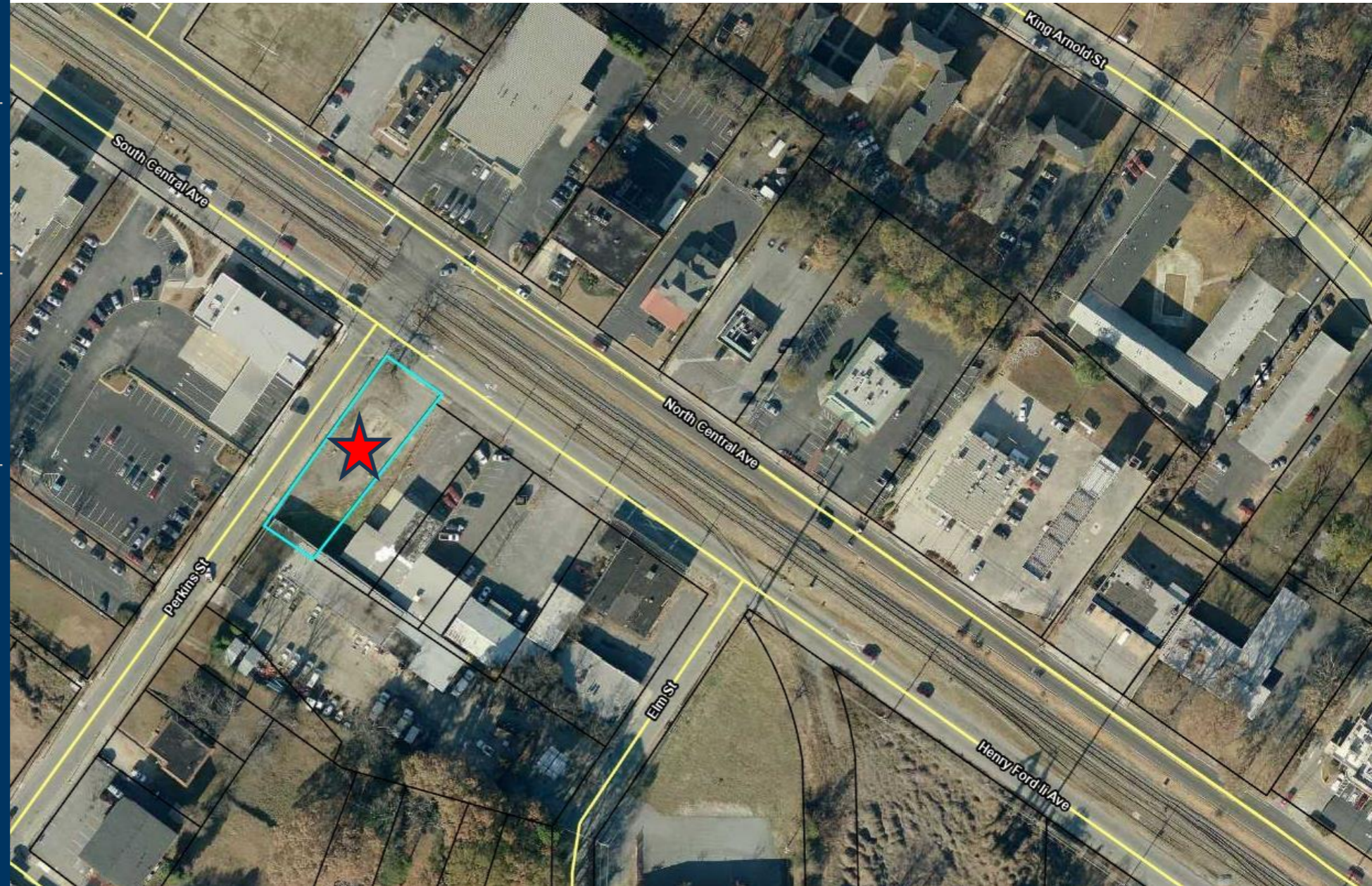
- This property offers easy access to both I-85 and I-75, making it an ideal location for any retailer.
- Located less than a mile away from Porsche Experience Center Atlanta, and 1.5 miles from Hartsfield-Jackson International Airport.
- Zoned C1 | Neighborhood Commercial
- 18,199 VPD
- Ground Lease Opportunity | 0.34 Acres



3552 Perkins Street

GLA: 0.34 Acres

Availability: Ground Lease Available



3552 Perkins Street

Site Plan

AREA DEMOGRAPHICS



2023
Population

| | |
|--------|---------|
| 1 MILE | 6,811 |
| 3 MILE | 45,389 |
| 5 MILE | 176,265 |



2023 Daytime
Population

| | |
|--------|--------|
| 1 MILE | 7,622 |
| 3 MILE | 39,686 |
| 5 MILE | 85,602 |



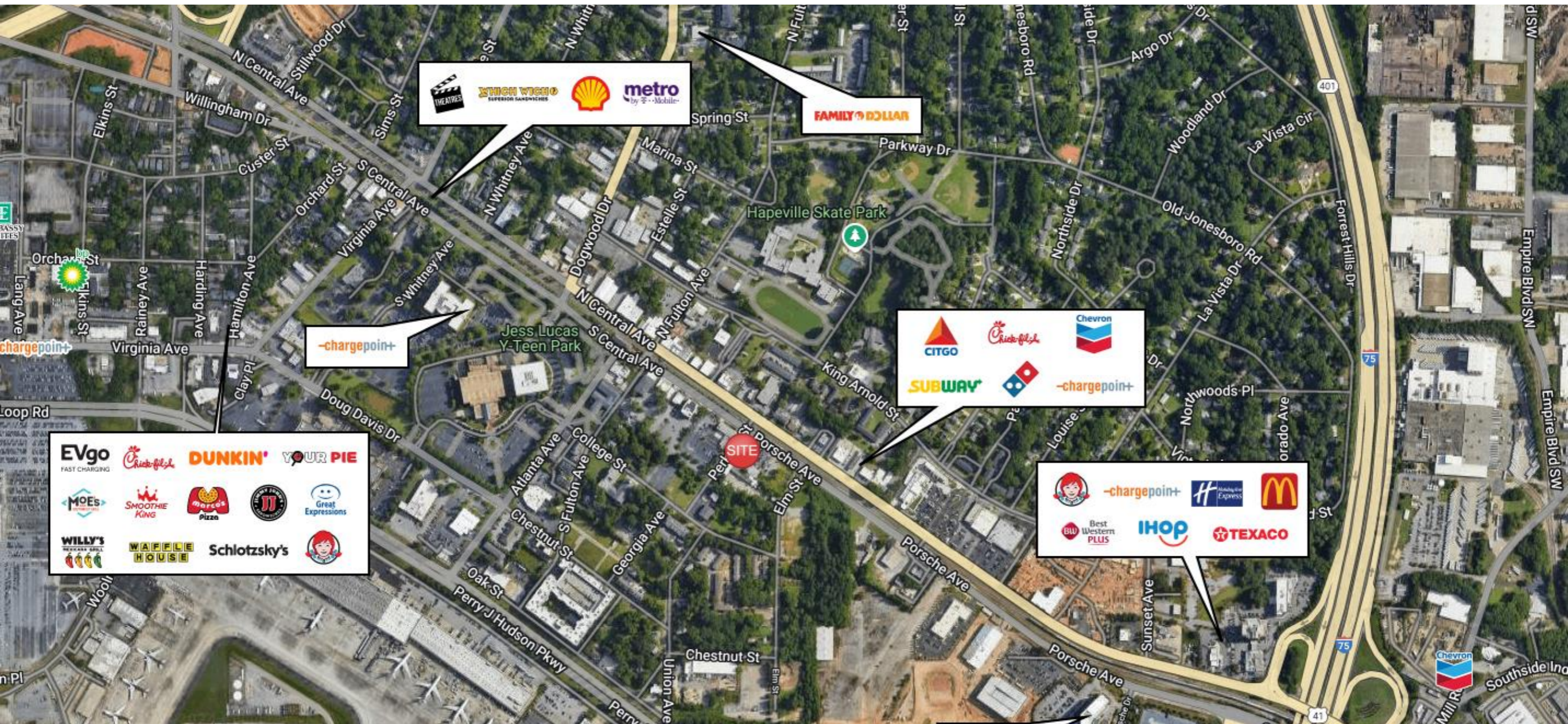
Household 2023

| | |
|--------|--------|
| 1 MILE | 2,849 |
| 3 MILE | 18,308 |
| 5 MILE | 70,773 |



Household
Income

| | |
|--------|----------|
| 1 MILE | \$87,009 |
| 3 MILE | \$77,750 |
| 5 MILE | \$71,418 |



3552 Perkins Street

Trade Area Overview